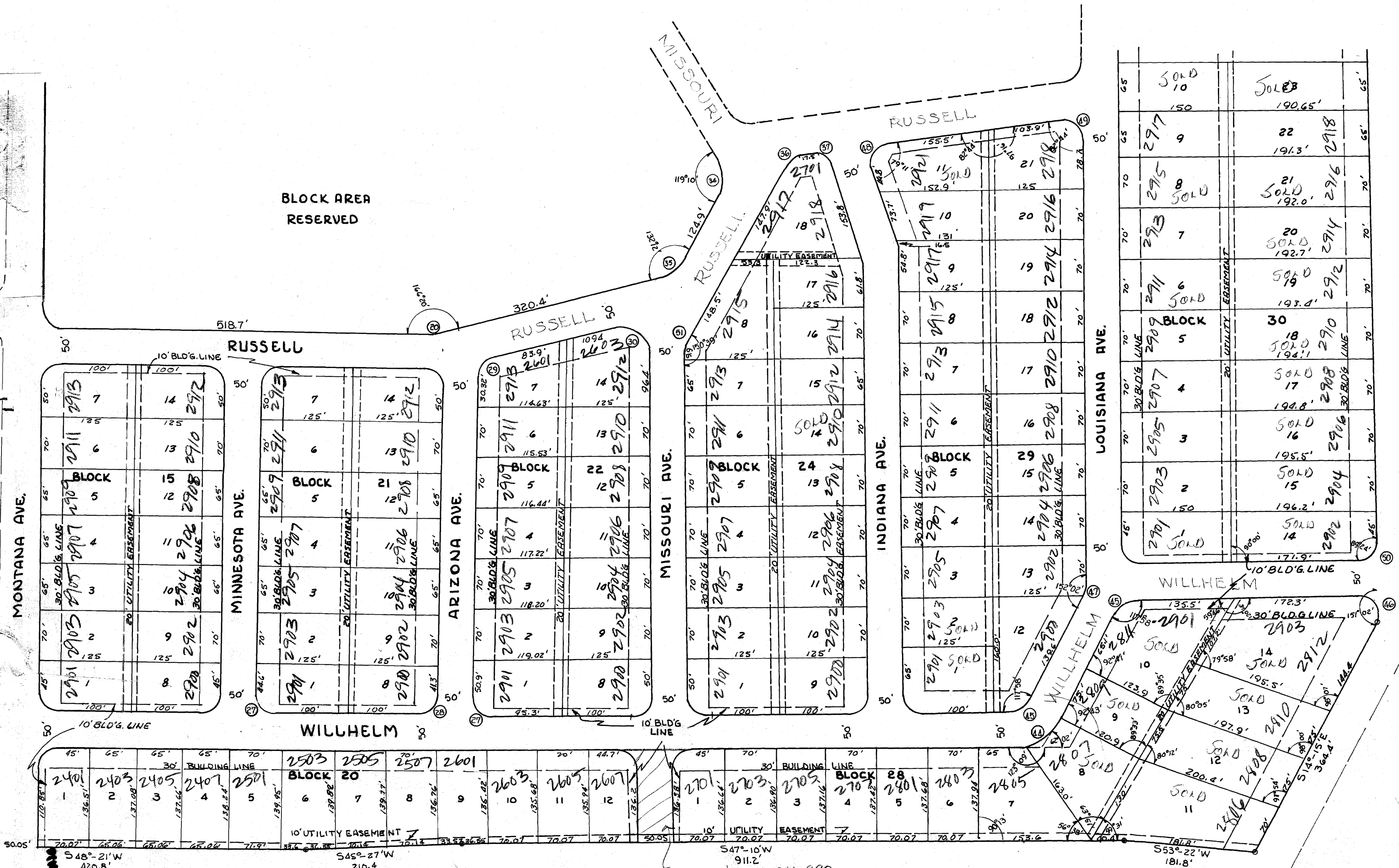


# SECOND SUBDIVISION OF LYNNDALE ACRES (PART II)

(SOUTH PART)



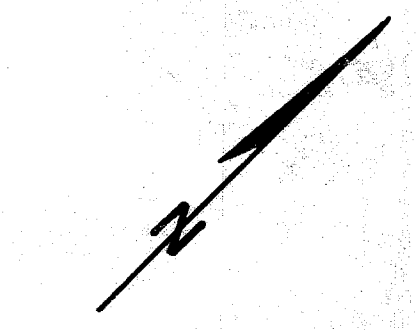
CURVE	ANGLE	RADIUS	TANGENT
27	90°45'	25'	25.2'
28	89°15'	25'	25.3'
29	75°35'	25'	19.5'
30	103°40'	25'	31.9'
34	60°50'	25'	14.7'
35	47°48'	25'	11.2'
36	53°22'	25'	12.5'
37	79°11'	25'	20.0'
44	62°02'	75'	45'
45	62°02'	25'	15'
46	89°24'	25'	24.7'
47	27°58'	25'	6.23'
48	100°49'	25'	30.0'
49	97°16'	25'	28.8'
50	90°36'	25'	25.3'
51	29°21'	25'	6.5'

ALL STREETS ANGLE, UNLESS NOTED ARE 90° WITH 25' RADIUS AND TANGENTS

NOTION FOUND RECORDED IN VOL 166 PAGE DATED DECEMBER 14, 1954

(SEE ALSO VOL. 168, PAGE 639 DATED JUNE 9, 1955)

SCALE: 1" = 100'



220

CARVEY T NEVILL PROPERTY

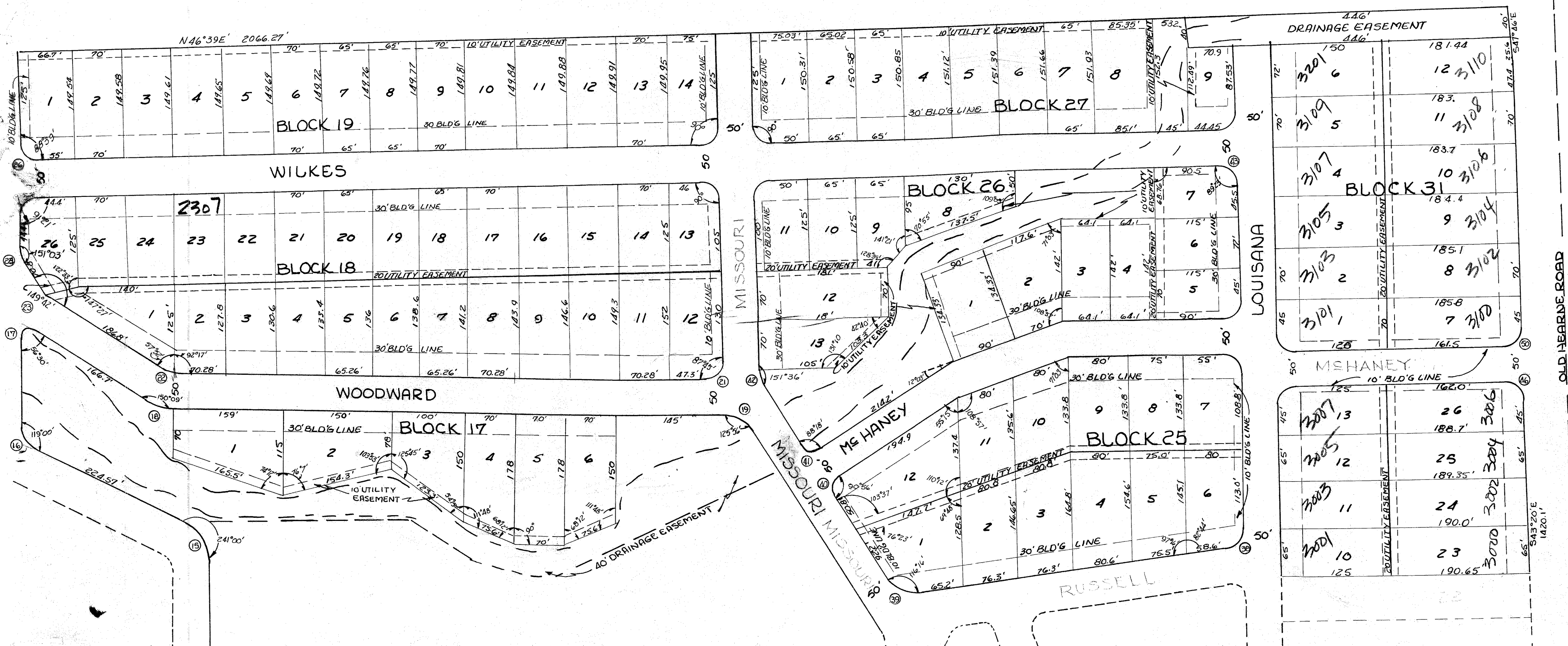
SHEET 1 of 2

on Indiana  
no  
stake

ST closed by ORD No 890  
11/93

RODGER POWER PROPERTY

MAXWELL PROPERTY



CURVE	ANGLE	RADIUS	TANGENT
15	61°00'	75'	43.5'
16	61°00'	25'	14.7'
17	123°30'	25'	46.5'
18	29°51'	75'	19.9'
19	54°04'	25'	13.0'
21	92°15'	25'	25.8'
22	29°51'	25'	6.65'
23	30°18'	25'	6.75'
24	28°57'	25'	6.50'
25	88°39'	25'	24.4'
26	91°21'	25'	25.4'
38	82°44'	25'	22.0'
39	63°44'	25'	15.5'
40	89°04'	25'	24.6'
41	91°42'	25'	25.8'
42	28°24'	25'	6.25'
43	90°37'	25'	25.2'
46	89°24'	25'	24.7'

ALL STREET ANGLES, UNLESS NOTED, ARE 90°, WITH 25' RADII AND TANGENTS.

on base line station

SCALE: 1"=100'

**SECOND SUBDIVISION OF LYNNDALE ACRES (PART 2)**

ADDITION FOUND RECORDED IN D.R.: Vol. 166, Pg. 254  
Dec. 14, 1954

(NORTH PART)

SEE ALSO D.R.: Vol. 168, Pg. 639  
JUNE 9, 1955

221